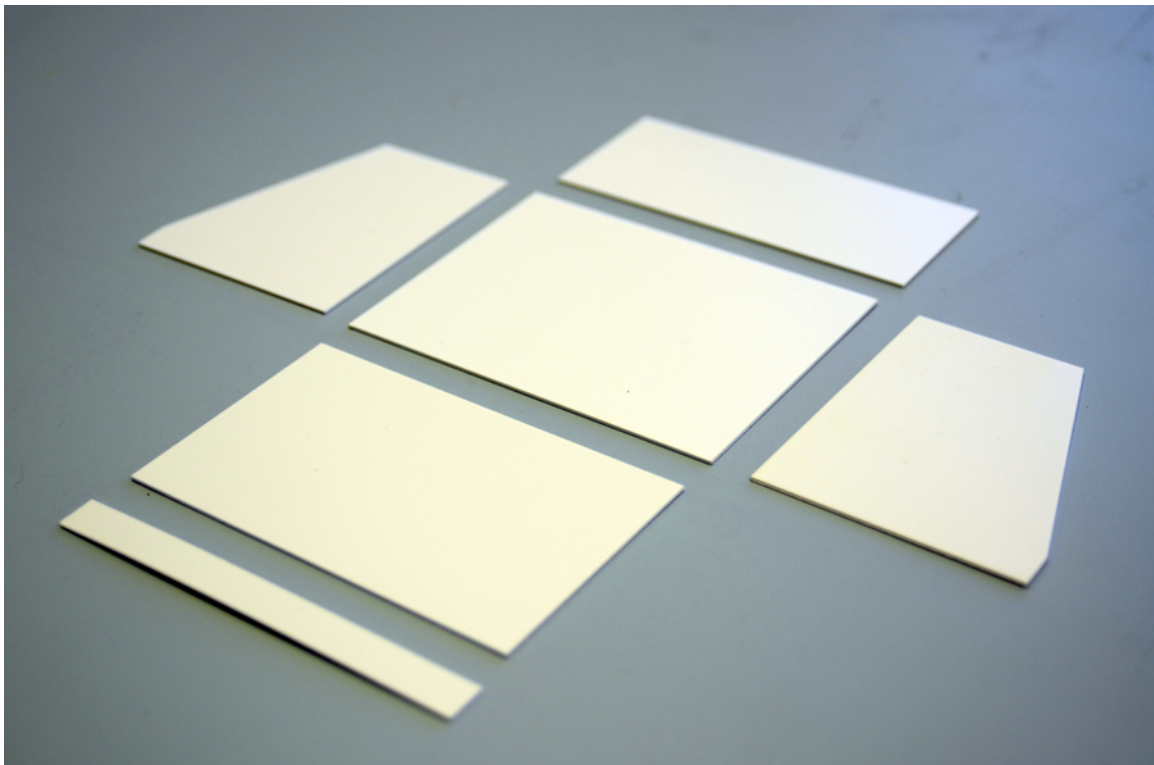


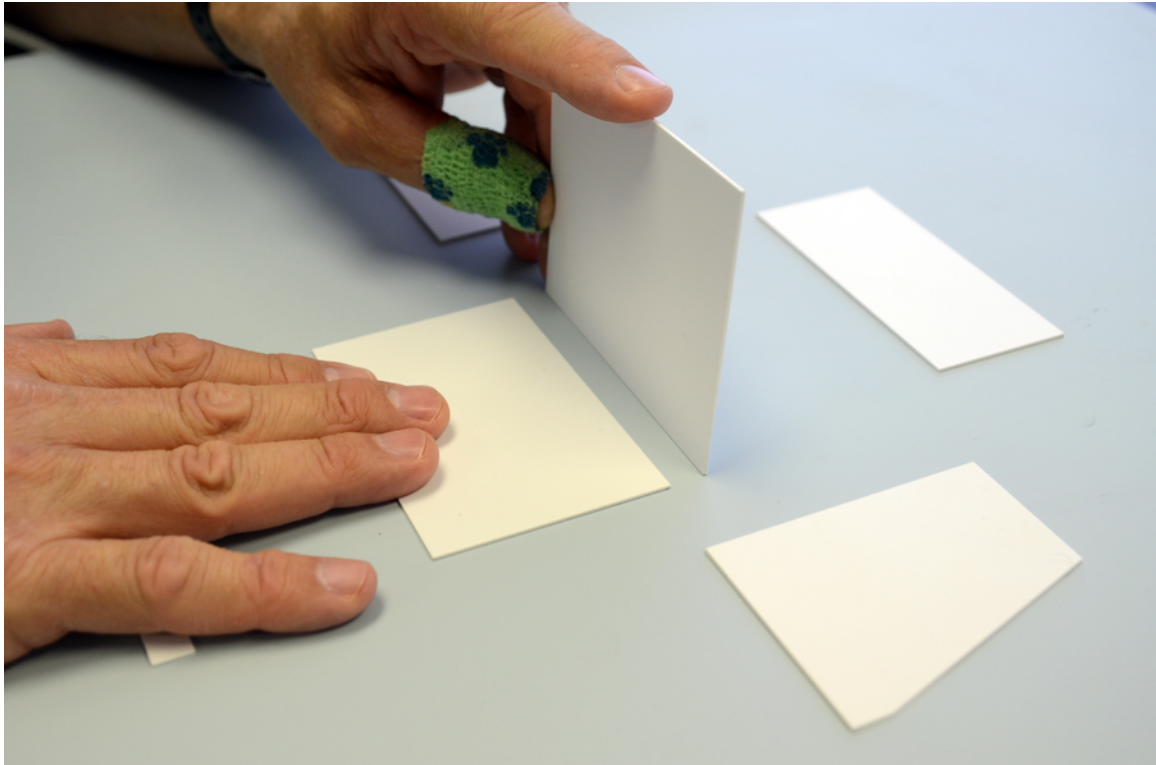
Building Aurora's Paint Booth

Thank you for purchasing the paint booth for Filmy's Girls' *Aurora*. The paint booth consists of six laser-cut styrene parts. Please note that the process of building and painting this model kit requires a certain level of modeling skill. Do NOT let children or teenaged modelers work on this kit without adult supervision.

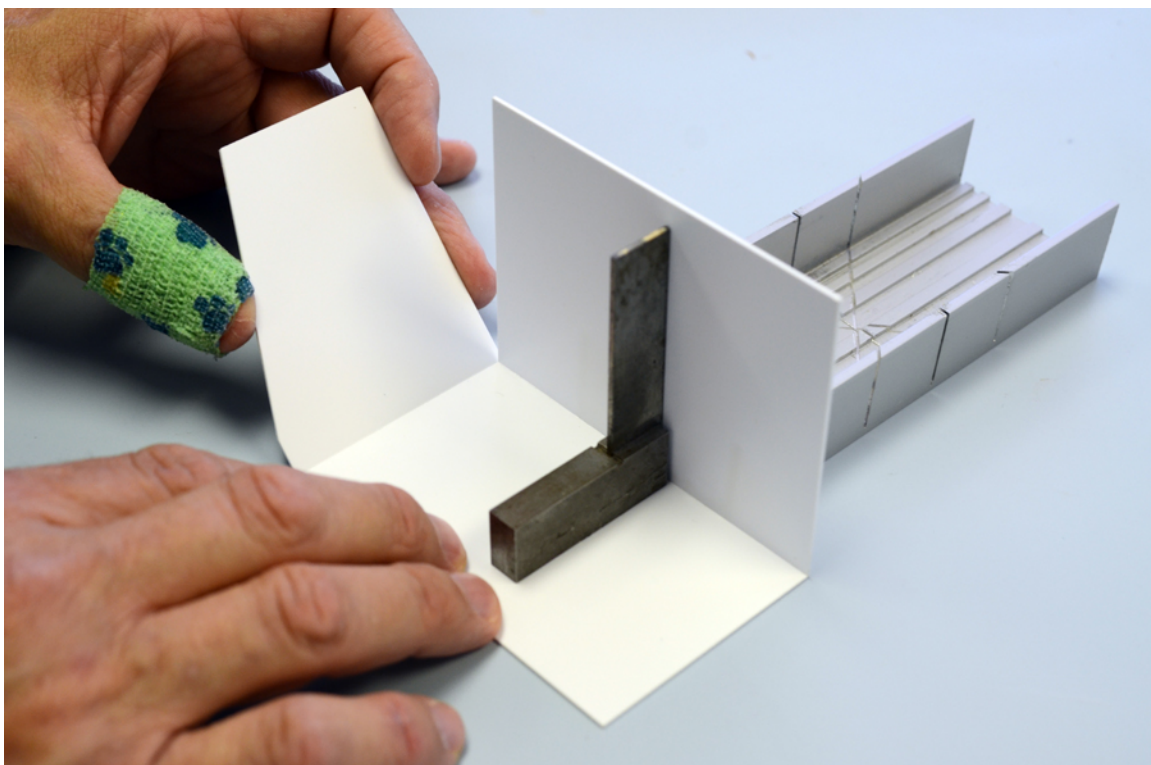
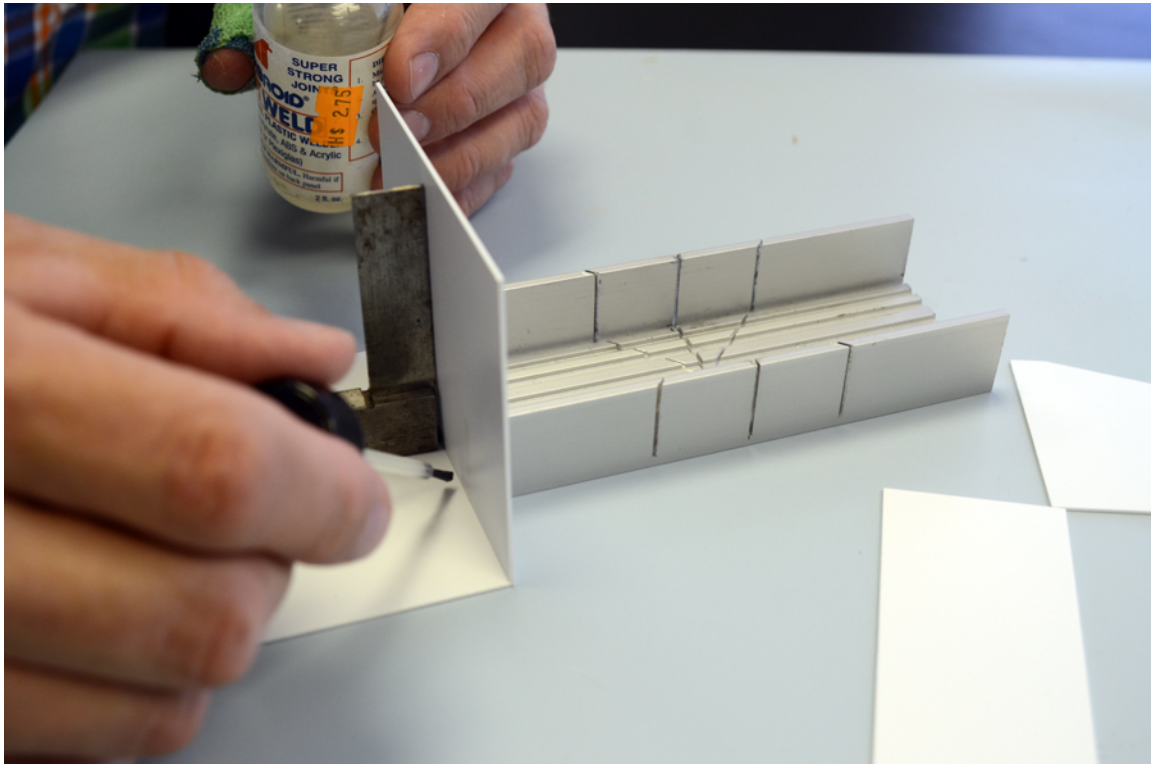
The first photo shows the six pieces included with the kit. I suggest that you lay your parts out in a similar manner. Since the parts are laser-cut, the tolerances are pretty tight, but you will need to make some slight adjustments as you go.



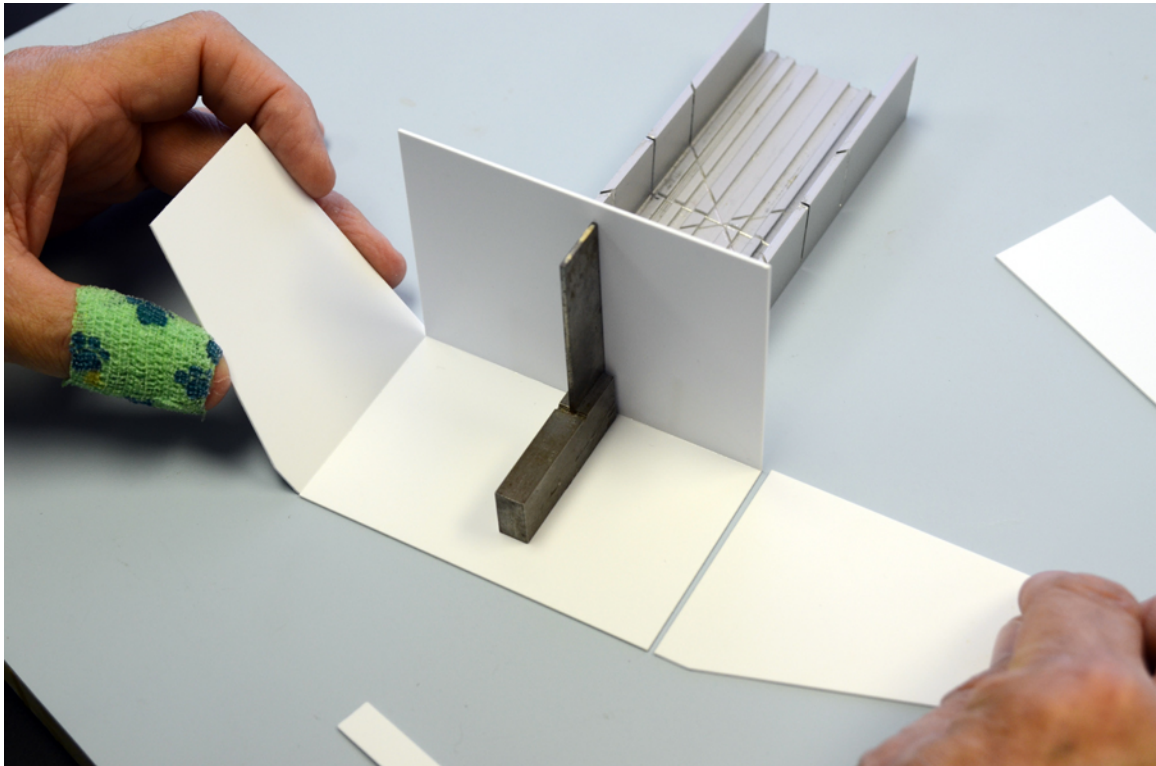
The first step is to attach the back of the booth to the base. You can use any kind of adhesive that you like – CA, styrene glue, Testor's cement, or whatever you like. I prefer Ambroid Pro-Weld or Tenax for applications like this because the capillary action of the thin cement fills the join cleanly. Lay the bottom flat on your modeling surface and butt the lower portion of the back piece to the rear edge of the base.



In order to keep everything lined up and true, I use a variety of items from my toolbox – a miter box, mini-squares, anything metal with a solid 90-degree angle. Position your parts and run a bead of your preferred adhesive along the join line.



Position the first end piece so that it rests on the work surface, then butt it up against the edge of the base like you did with the rear piece.

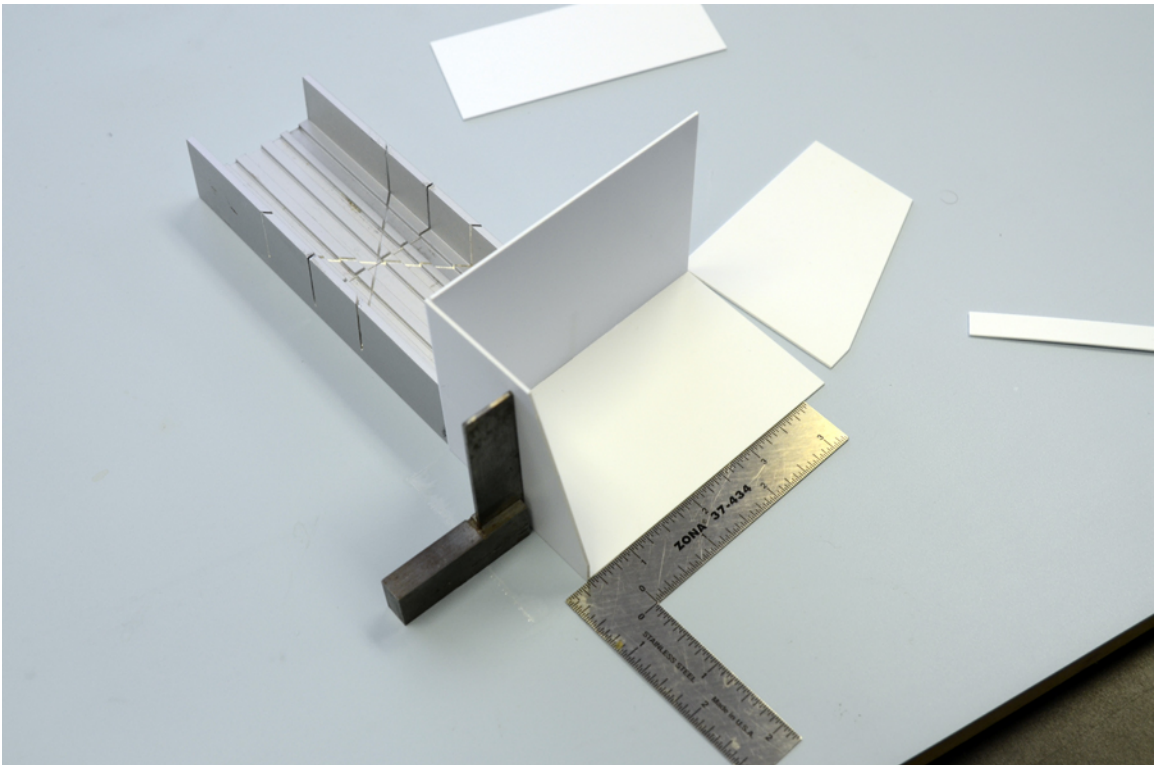


Line up the front edge of both parts using a straight edge and apply cement.

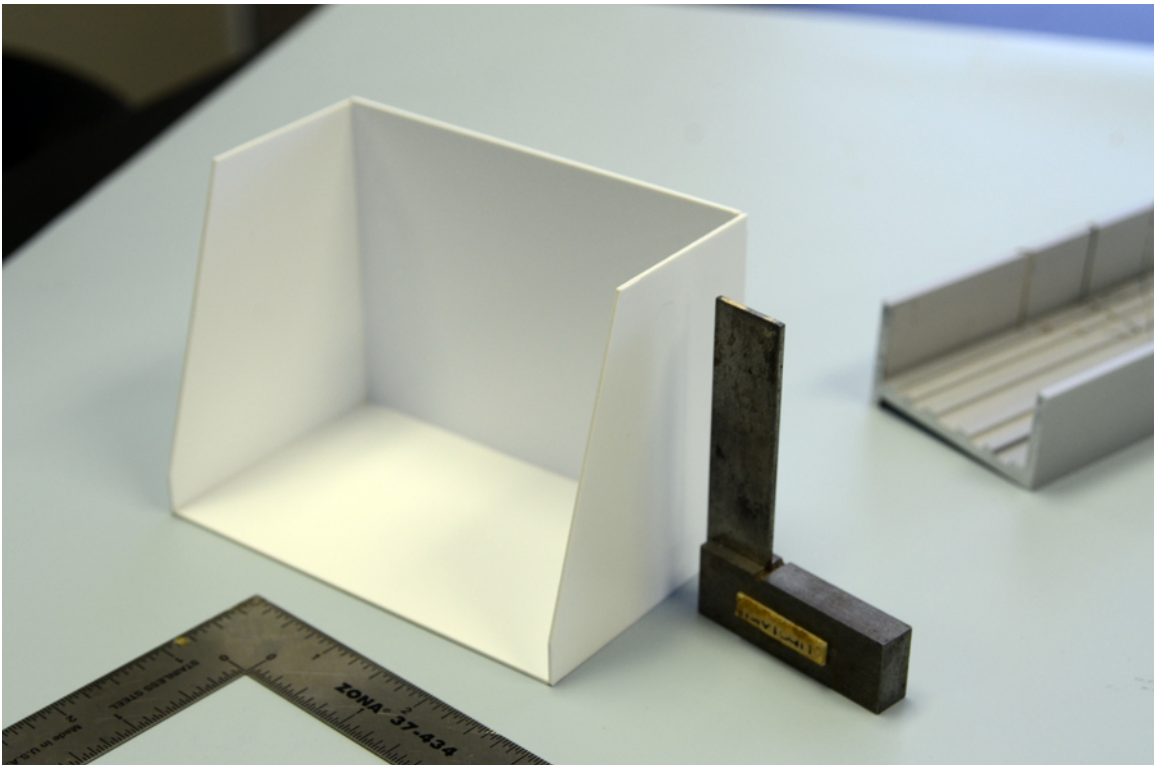
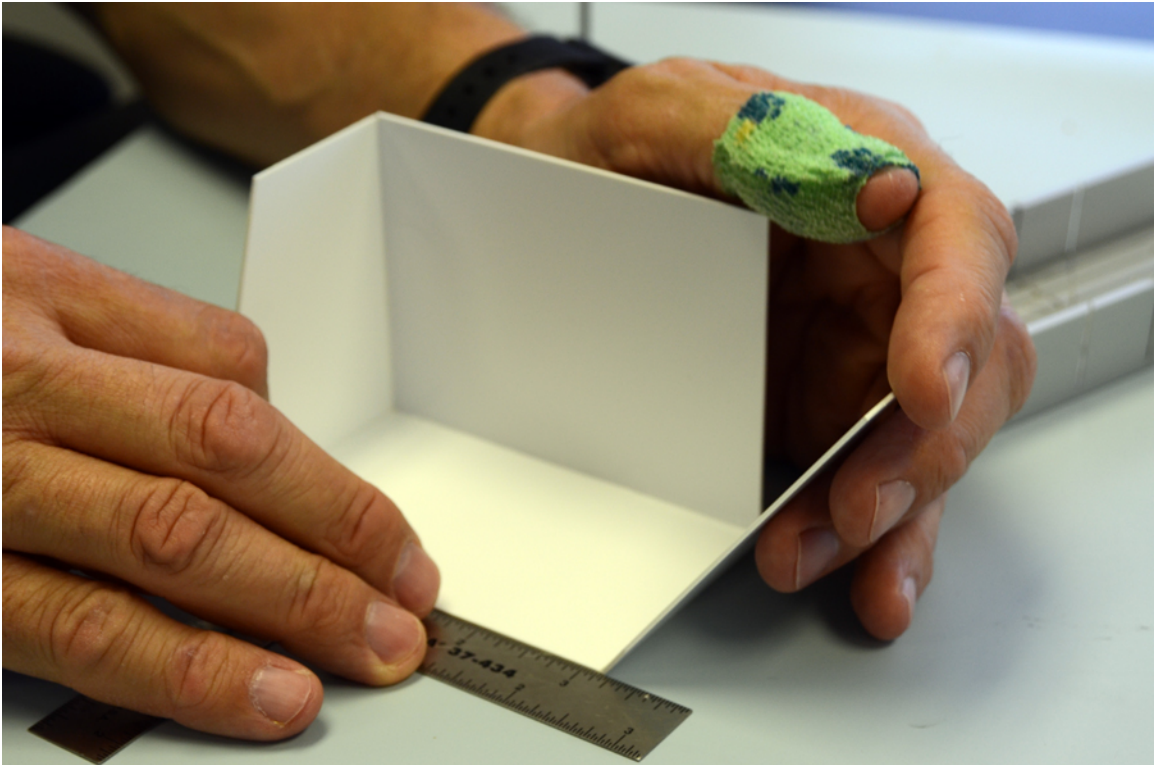




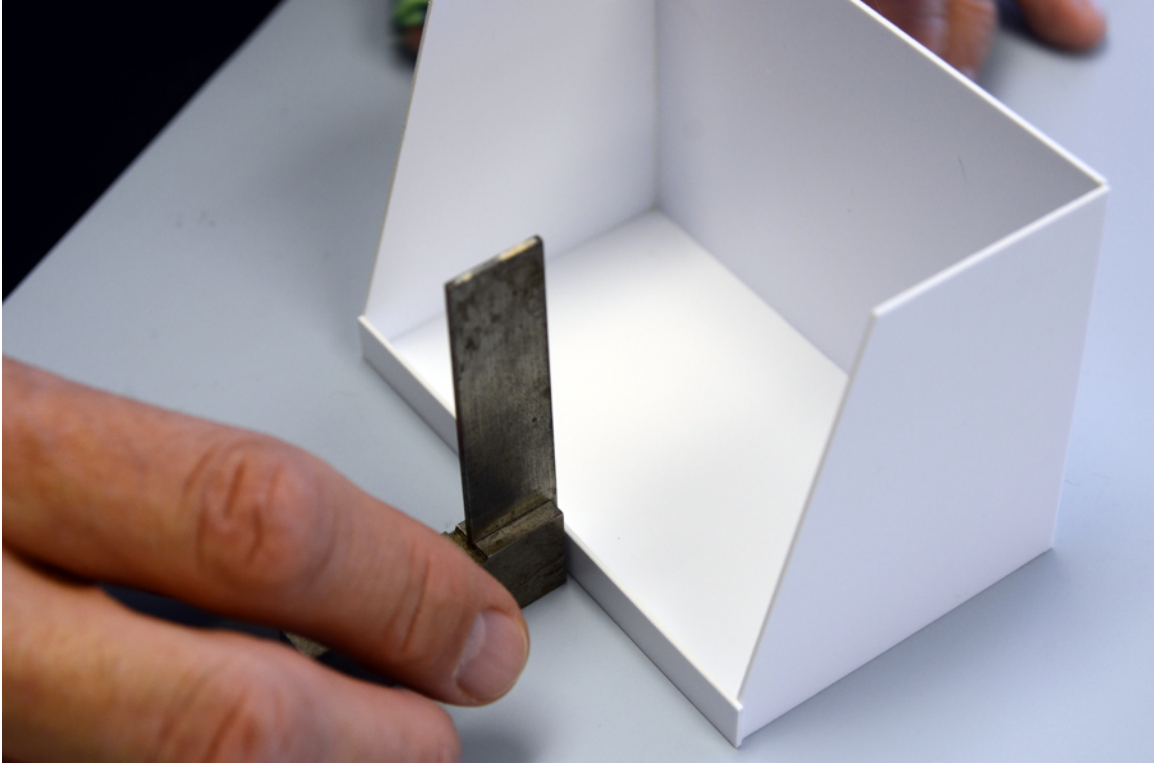
Keeping everything square, let the parts bond until the join is solid.



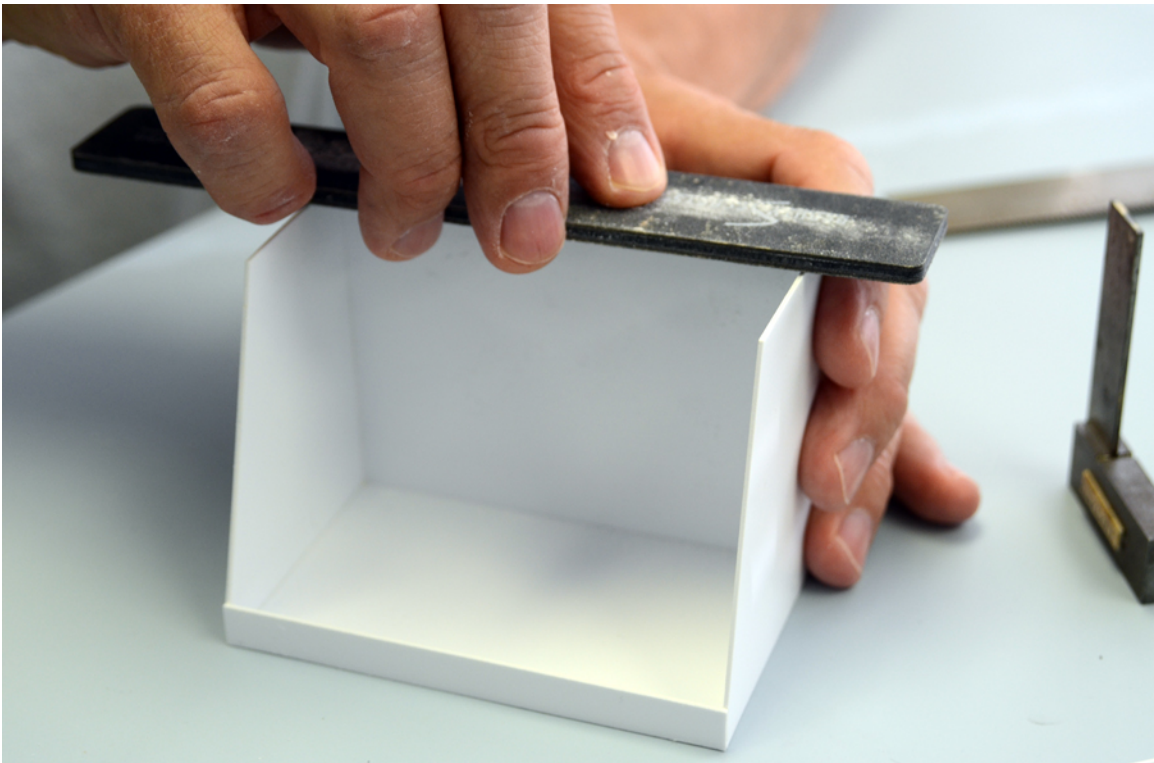
Repeat the process with the other side.



Attach the front lower panel in the same manner.



The top piece may need a slight adjustment. If so, you can use one of two approaches. The first is to use a sanding stick to remove excess material from the back piece so that it sits flush with the sides.



The second adjustment can be made by CAREFULLY removing a sliver from the long side of the top section using a hobby knife and a straightedge, and butting it up against the back piece. Be VERY careful if you do this, and keep your fingers clear of the blade!



Attach the top to the booth, and voila! You can further customize the booth by adding a light bar to the top, a fan to the back, and an electrical switch and outlet to the side. Use your imagination, and please take photos to show us what you've done!

